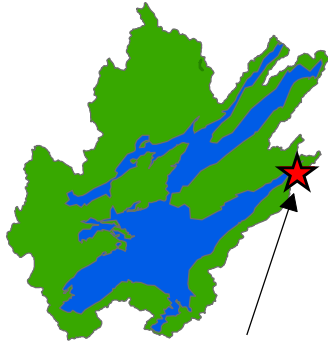


East Bay Community Trail Hiking Trail



You are here

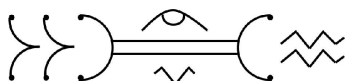
Trail Notes:

Length: from parking circle -
3.1 km (return)
Elevation at Trail Head: 33 m
Top Elevation: 70 m
Tolerant hardwood and mixed
wood forest (ranging from early
succession to groves of old Eastern
Hemlock)

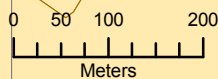
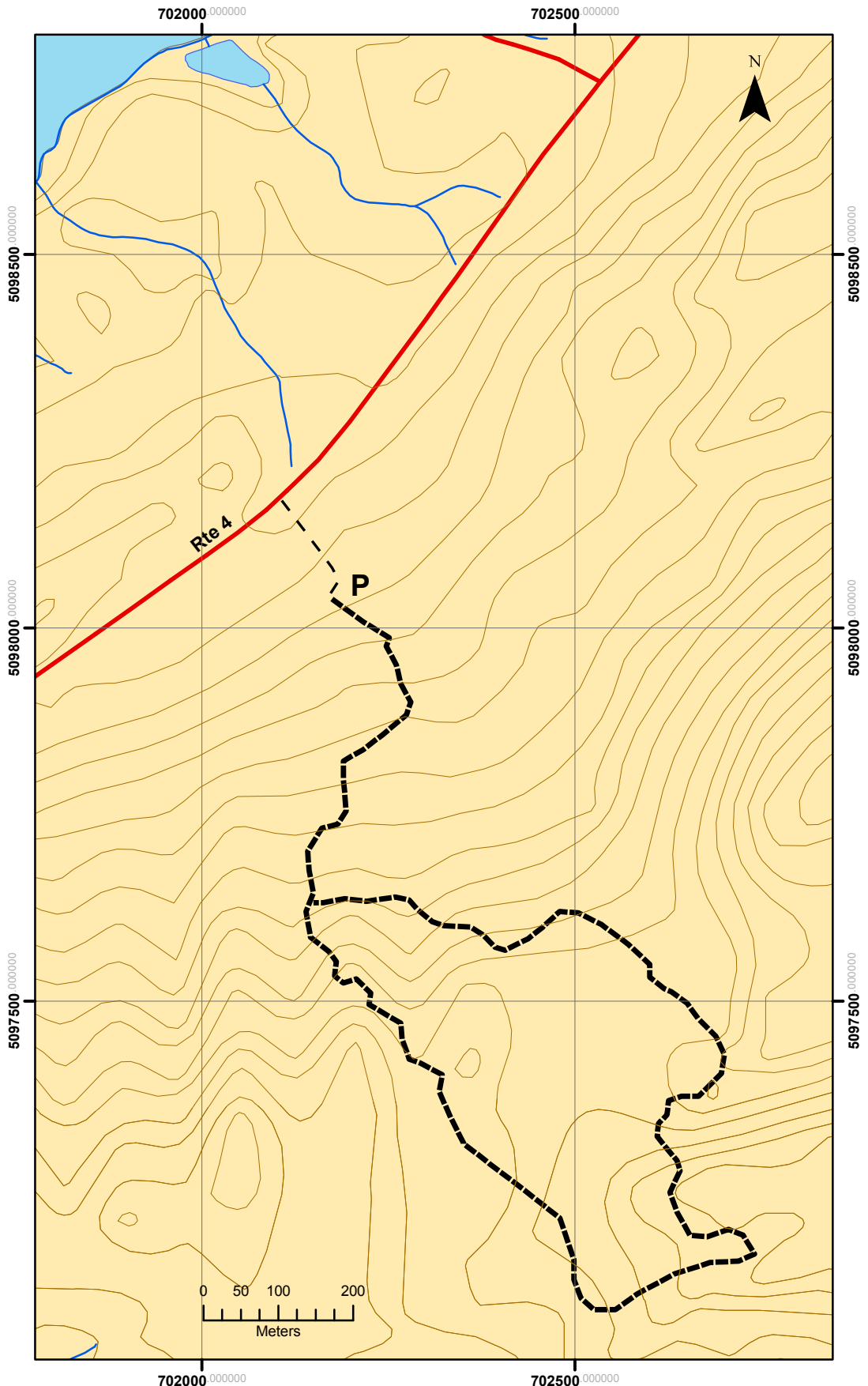
Well maintained forest walk
Learning opportunities (signage)
Parking

No water or washrooms

EFFORT: Easy



www.blbra.ca



Please carry out what you bring in, respect land owner's property
and know you are on the trail at your own risk. Have fun!

'Walking Around the Bras d'Or'

A project of the Bras d'Or Lake Biosphere Reserve Association

Basemaps downloaded from
GeoNova Portal
Service Nova Scotia and Municipal Relations
Projection: Universal Transverse Mercator
Geoidic Datum: NAD 83 CSRS UTM Zone 20
Contours (5 m)
LB: September 23, 2016
rev: June 27, 2017