

INVERTEBRATE
SPECIES OF

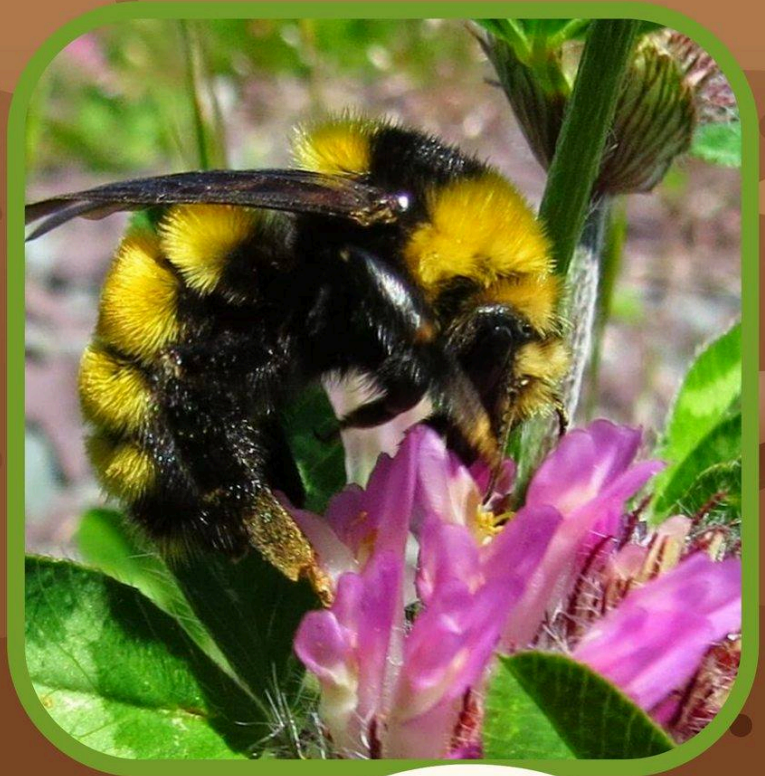
BRAS D'OR

NORTHERN AMBER BUMBLEBEE BOURDON AMBRÉ DU NORD AMU



POPULATION:
Least Concern

Northern amber bumblebees have yellow hairs on the body and pale to white hairs on their face. They are usually found in woodland areas and typically nest underground. Like other bumblebees, the northern amber nest in colonies with a single queen. Bumblebee hind legs lack hair and are flat, forming a "pocket" for collecting pollen. Queens are larger in size at about 18-22 mm, while males are about 14-17 mm and workers are 13 mm in size.



THREATS

Habitat loss, climate change, and disease spillover from managed bees are the top general threats to bumblebees.

HISTORY

Northern amber bumblebees are native to northern North America. They are widely observed in Canada, Alaska and the northern and eastern contiguous United States. Northern amber bumblebees are widespread in Canada, but are declining in the midwestern United States.

FUN FACT!

Northern amber bumble bees have long tongues, making them ideal for pollinating long-tubed flowers!



ACAP
Cape Breton